



## WL700LS Lady Regal Long Sleeve

Your go-to women's woven long sleeve shirt - great value, quality, hand feel and styling, rolled into one. Women's 3.8 oz. 60% cotton/40% polyester brushed twill long sleeve woven shirt. Darts along the front, back and bust for a flattering fit. Features two-button adjustable cuffs.

### MODEL



### BACK



### SIZES:

XS (2-4) | S (6-8) | M (10-12) | L (14-16) | XL (18-20) | 2XL (22-24) | 3XL (26-28) | 4XL (30-32)



### COLORS



Black

Charcoal

French Blue

Forest Green

Khaki

Navy

Red

White

### SIZE CHART

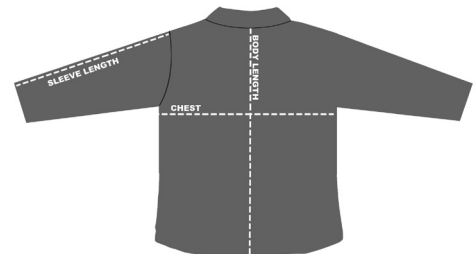
#### HOW TO MEASURE:

Smooth out wrinkles and lay garment flat on a table before measuring.

**CHEST** – Measure from 1" below armhole straight across chest.

**SLEEVE LENGTH** – Measure from top of armhole to sleeve opening.

**BODY LENGTH** – Measure from center back of neck to sweep opening.



WL700LS Lady Regal Long Sleeve

SIZE (Measurement in inches)	XS	S	M	L	XL	2XL	3XL	4XL
CHEST (1" below armhole)	18.5	19.5	21.5	23	24.5	26.5	28.5	30.5
SLEEVE LENGTH (from top of armhole)	23.75	24	24.25	24.5	24.75	25	25.25	25.5
BODY LENGTH (from center back neck)	25.5	26	26.5	27.5	28.5	30	30.5	31